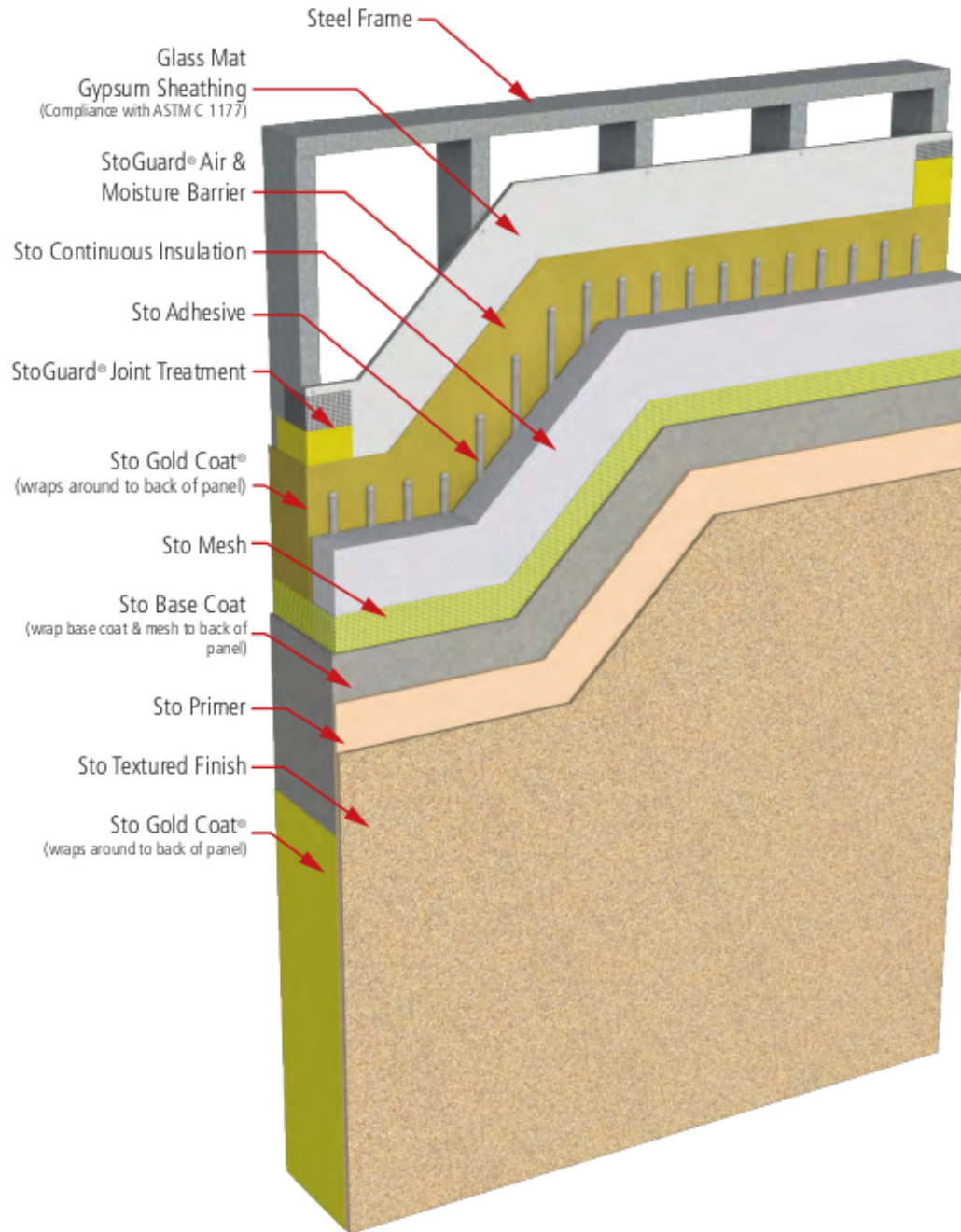


sto panel™ Classic ci



Notes:

1. Description: lightweight energy efficient pre-fabricated exterior wall panel with continuous insulation, continuous air barrier and integral decorative and protective finish options

2. Building Code Compliance: meets requirements of NFPA 285 and NFPA 268 for use on noncombustible construction (Types I-IV). Refer to ICC ESR 1748.

IBC 2009, 2012 and 2015

Chapter 7: Fire Resistance Rated Construction
Chapter 14: Exterior Insulation and Finish Systems, Weather Resistance

Chapter 16: Structural - Transverse Wind Load Resistance

Chapter 17: Special Inspections, Types I-IV (noncombustible) Construction

Chapter 26: Types I-IV (noncombustible) Construction, Ignition Resistance, Surface Burning Characteristics

IECC 2009, 2012 and 2015

Chapter 4: Continuous Insulation (ci) over Metal Frame Walls - All Climate Zones (with sufficient ci thickness)

Chapter 4: Continuous Air Barrier

IGCC 2012

Chapter 6: Energy Conservation, Efficiency and Atmospheric Quality (Section 606: Building Thermal Envelope insulation and Air Sealing)

Alternative Compliance Path: ASHRAE 189.1-2009

3. Energy Standards Compliance

ASHRAE 90.1 - 2007, 2010 and 2013
Section 5: Building Envelope Continuous Insulation (ci) over Metal Frame Walls - All Climate Zones (with sufficient ci thickness)

Section 5: Continuous Air Barrier

4. Green Building Standards Compliance

ASHRAE 189.1 - 2009

Normative Appendix A: Building Envelope Continuous Insulation (ci) over Metal Frame Walls - All Climate Zones (with sufficient ci thickness)

Normative Appendix B: Continuous Air Barrier

5. LEED Eligibility

Eligible contribution towards credits in the following NC (New Construction) categories:

- Energy and Atmosphere (EA)
- Materials and Resources (MR)
- Innovation in Design (ID)

ATTENTION

Sto products are intended for use by qualified professional contractors, not consumers, as a component of a larger construction assembly as specified by a qualified design professional, general contractor or builder. They should be installed in accordance with these specifications and Sto's instructions. Sto Corp. disclaims all, and assumes no, liability for on-site inspectors, for its products applied improperly, or by unqualified persons or entities, or as part of an improperly designed or constructed building, for the nonperformance of adjacent building components or assemblies, or for other construction activities beyond Sto's control. Improper use of Sto products or use as part of an improperly designed or constructed larger assembly or building may result in serious damage to Sto products, and to the structure of the building or its components.

STO CORP. DISCLAIMS ALL WARRANTIES EXPRESSED OR IMPLIED EXCEPT FOR EXPLICIT LIMITED WRITTEN WARRANTIES ISSUED TO AND ACCEPTED BY BUILDING OWNERS IN ACCORDANCE WITH STO'S WARRANTY PROGRAMS WHICH ARE SUBJECT TO CHANGE FROM TIME TO TIME. For the fullest, most current information on proper application, clean-up, mixing and other specifications and warranties, cautions and disclaimers, please refer to the Sto Corp. website, www.stocorp.com.

sto panel™

Sto Panel Technology

3800 Camp Creek Parkway
Building 1400, Suite 120
Atlanta, Georgia 30331
Phone: (888) 227-8334 Fax: (856) 690-0100
www.stopanel.com

PROJECT:				
ARCHITECTS:				
CONSTRUCTION MGR.:				
TITLE:				
SCALE:	DATE:	REVISION:	PROJ.N°:	DWG N°: